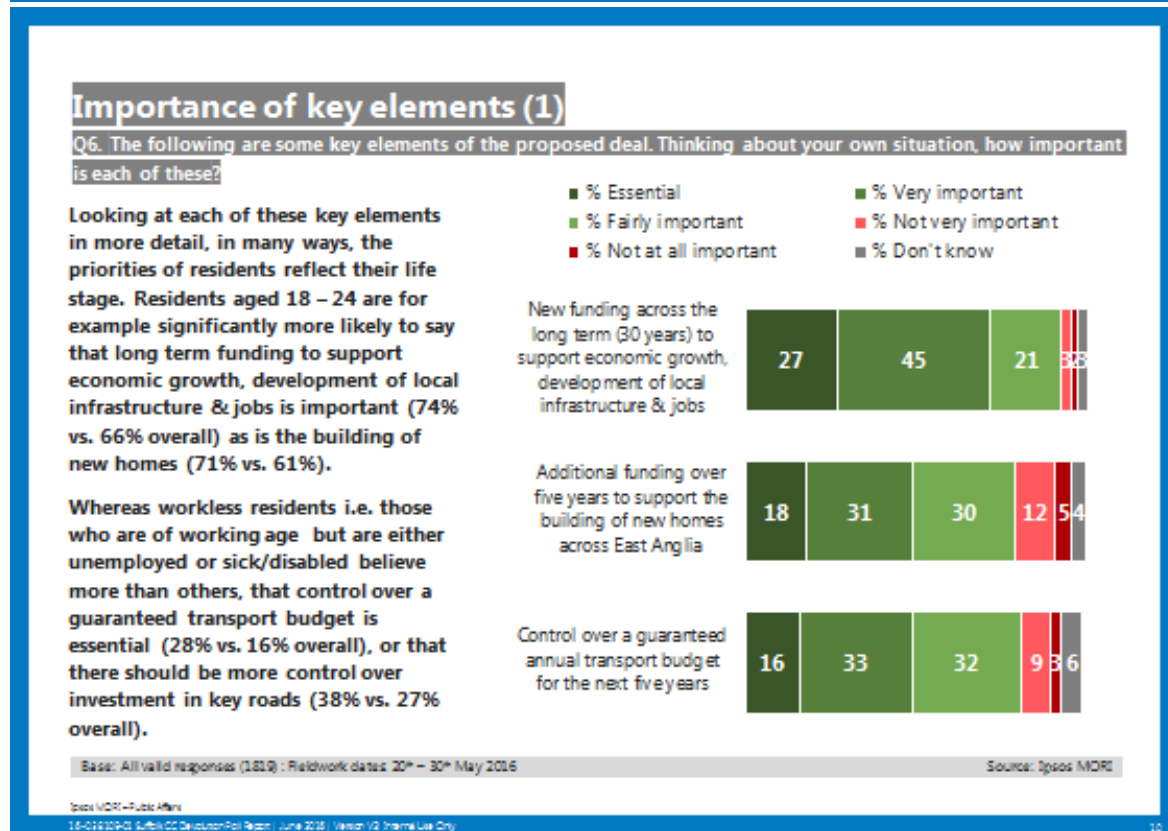
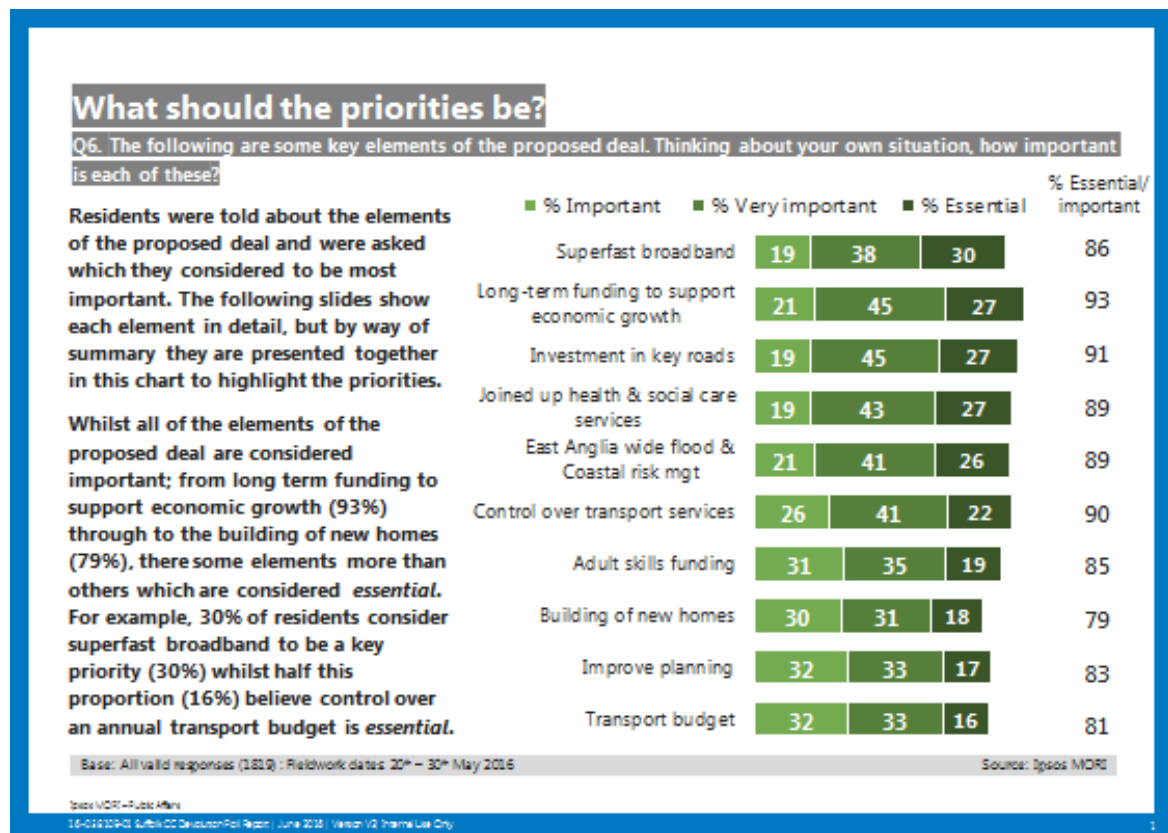


Summary of Consultation Responses to Suffolk’s survey on Devolution (May-June 2016)



Importance of key elements (2)

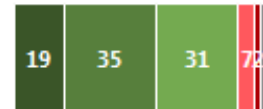
Q6. The following are some key elements of the proposed deal. Thinking about your own situation, how important is each of these?

Older residents aged 55+ years are generally more likely than other age groups to think that the majority of elements of the proposed deal are essential, the exception is superfast broadband and sustained economic growth.

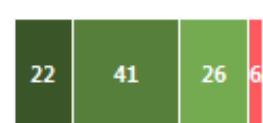
Retirees specifically believe control of a transport budget is essential (22% vs. 16% overall) as is the delivery of transport services so there are more options for local residents (29% vs. 22% overall). A significantly greater proportion of retirees also believe the investment in adult skills to match the local labour market is essential (22% vs. 19% overall) and that an East Anglia wide approach to flood & coastal risk management should be a priority (33% state it is essential vs. 26% overall).

- % Essential
- % Very important
- % Fairly important
- % Not very important
- % Not at all important
- % Don't know

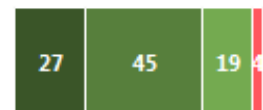
Gain control of an existing adult skills funding to ensure the training offer match the needs of local businesses and the local labour market



Greater control over who (and how) delivers transport services in East Anglia, ensuring that transport integrates better and there are more options for local residents



More control and influence over investment in key roads across East Anglia, thus ensuring maintenance and improvements can be prioritised locally, rather than having to compete with other works across the country



Base: All valid responses (1819) | Fieldwork dates: 20th – 30th May 2016

Source: Ipsos MOR1

Ipsos MOR1 - Public Affairs
18-016129-01_Life02-02-DevolutionForRegion - June 2016 | Version 02 - Frame Use Only

11

Importance of key elements (3)

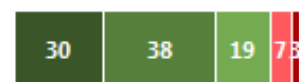
Q6. The following are some key elements of the proposed deal. Thinking about your own situation, how important is each of these?

Priorities are generally similar across the County although residents in Ipswich place greater emphasis on support to build new homes (25% of residents in this Borough believe this to be essential vs. 18% overall). They are also more likely to believe that there should be a guaranteed annual transport budget for the next five years (21% vs. 16% overall).

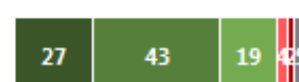
Residents in the Waveney District are more likely to prioritise an East Anglia wide approach to flood and coastal risk management than other parts of the County (32% of residents feel this is essential vs. 26% overall).

- % Essential
- % Very important
- % Fairly important
- % Not very important
- % Not at all important
- % Don't know

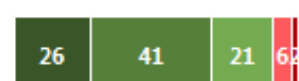
A commitment to providing superfast broadband and improved mobile phone reception in more communities, particularly in rural areas



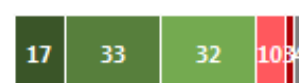
That the relevant councils will bring together health & social care services to provide a more joined up, single service for residents



Relevant authorities and partners take an East Anglia wide approach to flood & coastal risk management to better protect people, property and land from flooding



Local authorities work to improve planning for new buildings and developments



Base: All valid responses (1819) | Fieldwork dates: 20th – 30th May 2016

Source: Ipsos MOR1

Ipsos MOR1 - Public Affairs
18-016129-01_Life02-02-DevolutionForRegion - June 2016 | Version 02 - Frame Use Only

12